



## THE COMPACT AND AGILE CARD PRINTER

The Zenius printer is designed for single sided printing of a very large variety of plastic cards. Zenius generates color or monochrome cards, individually or in small runs, with top quality results. Zenius is a user-friendly, compact and cost-effective solution for delivering your personalized cards.

### FLEXIBILITY

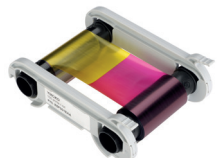
- With Zenius, you can choose to insert your cards individually or with the automatic feeder.
- The «Expert» version of Zenius features combinable encoding functions: magnetic encoding, contact and contactless chips. It takes just a few minutes to install these modules!

### EASE OF USE

- With the Evolis Premium Suite® software, you can receive notifications and easily control the printer from your computer.
- Evolis High Trust® ribbons are easy to install and automatically recognized and set by the printer.

### SMALL FOOTPRINT

- Hardly larger than a standard sheet of paper, Zenius fits perfectly into any environment, be it the office or a customer service counter.
- Zenius is an eco-designed printer: very efficient sleep mode and low energy consumption.



Easy handling, automatic ribbon recognition and setup



## MAIN FEATURES / Full technical specifications on [www.evolis.com](http://www.evolis.com)

### GENERAL FEATURES

- Direct-to-card dye-sublimation/Resin thermal transfer
- Single-sided printing, edge-to-edge
- 300 dpi print head (11.8 dots/mm)
- 16 million colors
- 16 MB memory (RAM), 32 MB for the Expert version
- Colors available: fire red & grey brown

### PRINTING PERFORMANCES

- Color (YMCKO): 120 - 150 cards/hour<sup>1</sup>
- Monochrome: 400 - 500 cards/hour

### INTERFACES

- USB (1.0, 1.1, 2.0, 3.0), cable supplied
- Ethernet TCP-IP 10BaseT, 100BaseT (Traffic Led) on the Expert version

### CARD MANAGEMENT AND SPECIFICATIONS

- Automatic or manual feeding
- Feeder capacity: 50 cards (0.76 mm – 30 mil)
- Output hopper capacity: 20 cards (0.76 mm – 30 mil)
- Card thickness: 0.25 to 0.76 mm (10 to 30 mil), gauge adjustment
- Card types: PVC cards, composite PVC cards, PET cards, ABS cards<sup>1</sup>, special varnished cards<sup>1</sup>
- Card format: ISO CR80 - ISO 7810 (53.98 mm x 85.60 mm)

### ADDITIONAL ENCODING MODULES

- Available modules on the Expert version:
  - Magnetic stripe encoder ISO 7811 HiCo/LoCo, JIS2
  - Smart contact station ISO 7816-2
  - Contact smart card encoder - PC/SC, EMV 2000-1
  - Contactless smart card encoder - ISO 14443A, B, ISO15693, MIFARE, DESFire, HID iCLASS
  - Other specific encoders upon request
- Internal USB ports
- Options can be combined
- Factory-installed or installed on site

### SAFETY

- Support for Kensington® security lock
- Data encryption for magnetic encoding

### DISPLAY

- Printer LEDs
- Graphical notifications from the printer<sup>2</sup>: cleaning alerts, empty/low level ribbon and card alerts, etc.

### EVOLIS HIGH TRUST® RIBBONS

To maximize the quality and durability of printed cards, the lifespan of the print head and the overall printer reliability, use Evolis High Trust® ribbons.

- Automatic identification and setting
- Delivered in a drop-in cassette for easy handling
- Ribbon saver for monochrome printing

List of ribbons available on [www.evolis.com](http://www.evolis.com)

### SOFTWARE

- Delivered with Evolis Premium Suite® for Windows®:
  - Printer driver
  - Evolis Print Center for administration and settings
  - Evolis Printer Manager for graphical notification<sup>3</sup>
  - 24/7 online support
  - Compatible with Windows® (32/64 bits): XP SP3, Vista, W7, W8, W10
- Delivered with cardPresso XXS Lite for designing and editing badges:
  - Internal database up to 50 records
  - Windows® (from XP onwards) and Mac OS X
- Delivered with a driver for Mac OS X (from 10.5 onwards)
- Linux OS upon request
- Evolis Premium SDK for remote supervision of the printer, while facilitating and speeding up integration into IT systems

### ECO-FRIENDLY DESIGN, CERTIFICATIONS AND STATEMENT OF COMPLIANCE

- Standby, sleep modes & reduced energy consumption
- CE, FCC, IEC, VCCI, CCC, KC, BIS, EAC
- RoHS

### SIZE AND WEIGHT

- Size (H x W x D): 195 x 205 x 315 mm (7.68" x 8.07" x 12.4")
- Weight: 3.3 kg (7.3 lbs)

### WARRANTY

- 2-year warranty (printer and print head)<sup>4</sup>
- Warranty extension available as an option

<sup>1</sup> Under specific conditions / <sup>2</sup> Depends on the Windows® version / <sup>3</sup> Requires the .net 4.0 client profile version  
<sup>4</sup> Warranty subject to observance of specific conditions and use of Evolis High Trust® ribbons



Smart Five Card Solutions  
 13 Morester Street, Glen Marais,  
 Gauteng, South Africa, 1619



Tel: +27 11 391 4693



email: [quotes@smartfive.co.za](mailto:quotes@smartfive.co.za)



<https://smartfive.co.za>

<https://www.facebook.com/smartfivecardsolutions>

<https://www.linkedin.com/company/smart-five-card-solutions>

### EUROPE - MIDDLE-EAST - AFRICA

Evolis - 14 avenue de la Fontaine - ZI Angers-Beaucouzé  
 49070 Beaucouzé - France

T +33 (0) 241 367 606 - F +33 (0) 241 367 612 - [info@evolis.com](mailto:info@evolis.com)

**AMERICAS** - Evolis Inc. - Fort Lauderdale - [evolisinc@evolis.com](mailto:evolisinc@evolis.com)

**ASIA-PACIFIC** - Evolis Asia Pte Ltd - Singapore - [evolisasia@evolis.com](mailto:evolisasia@evolis.com)

**CHINA** - Evolis China - Shanghai - [evolischina@evolis.com](mailto:evolischina@evolis.com)

**INDIA** - Evolis India - Mumbai - [evolisindia@evolis.com](mailto:evolisindia@evolis.com)